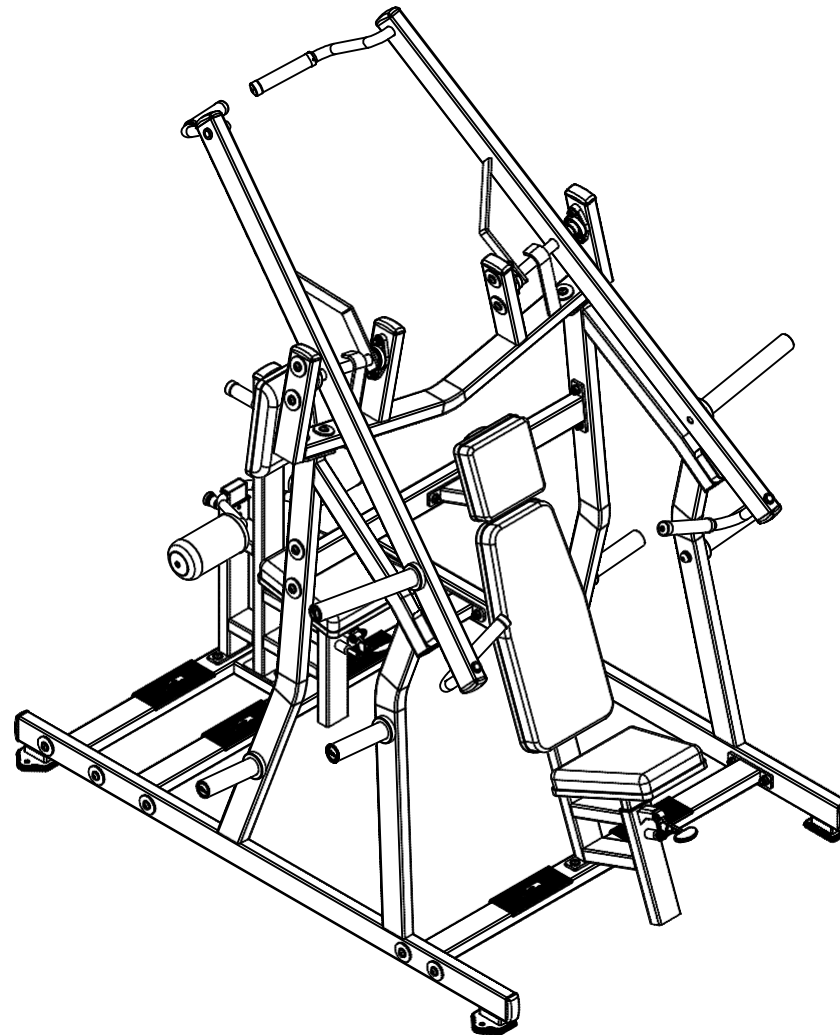
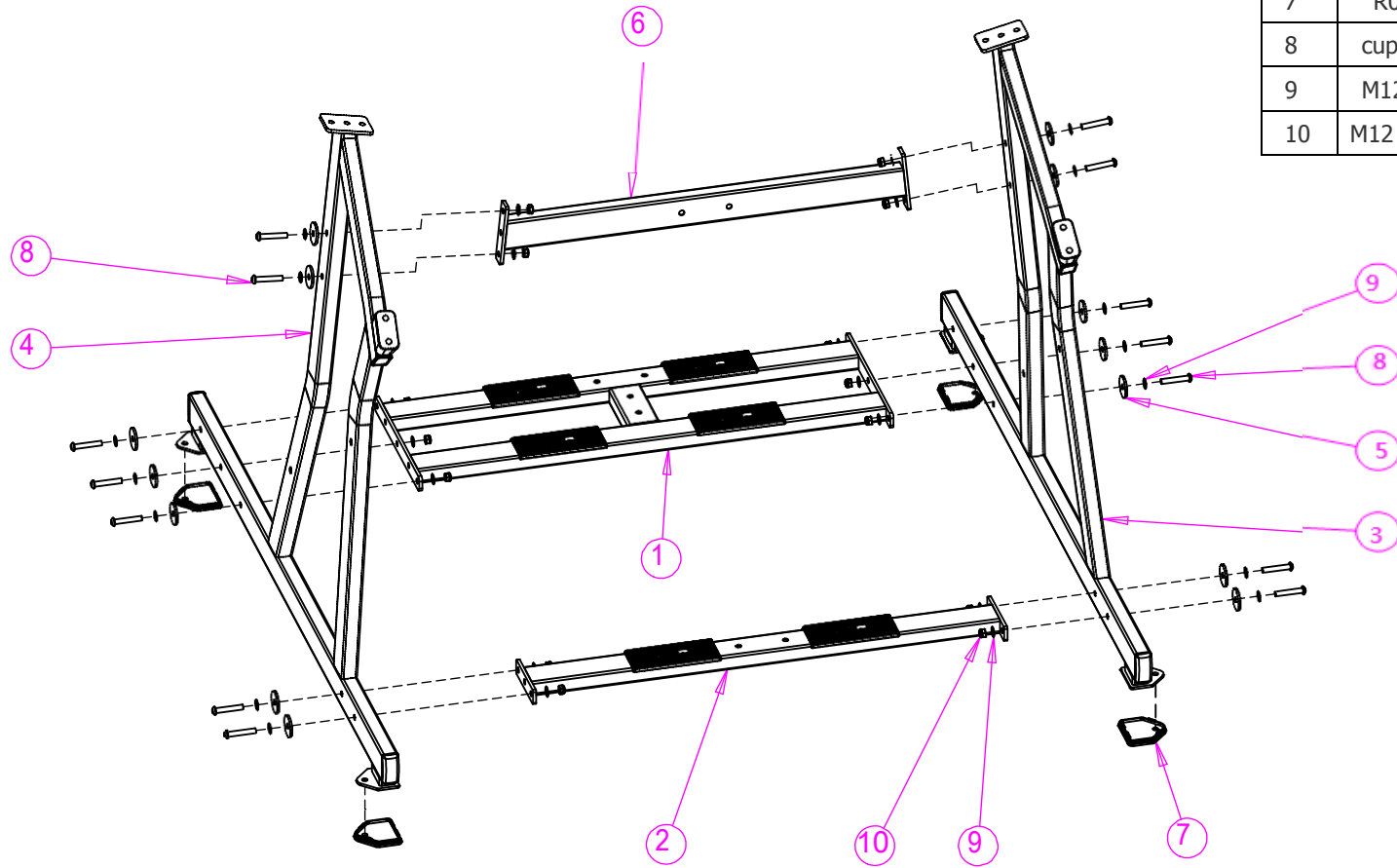


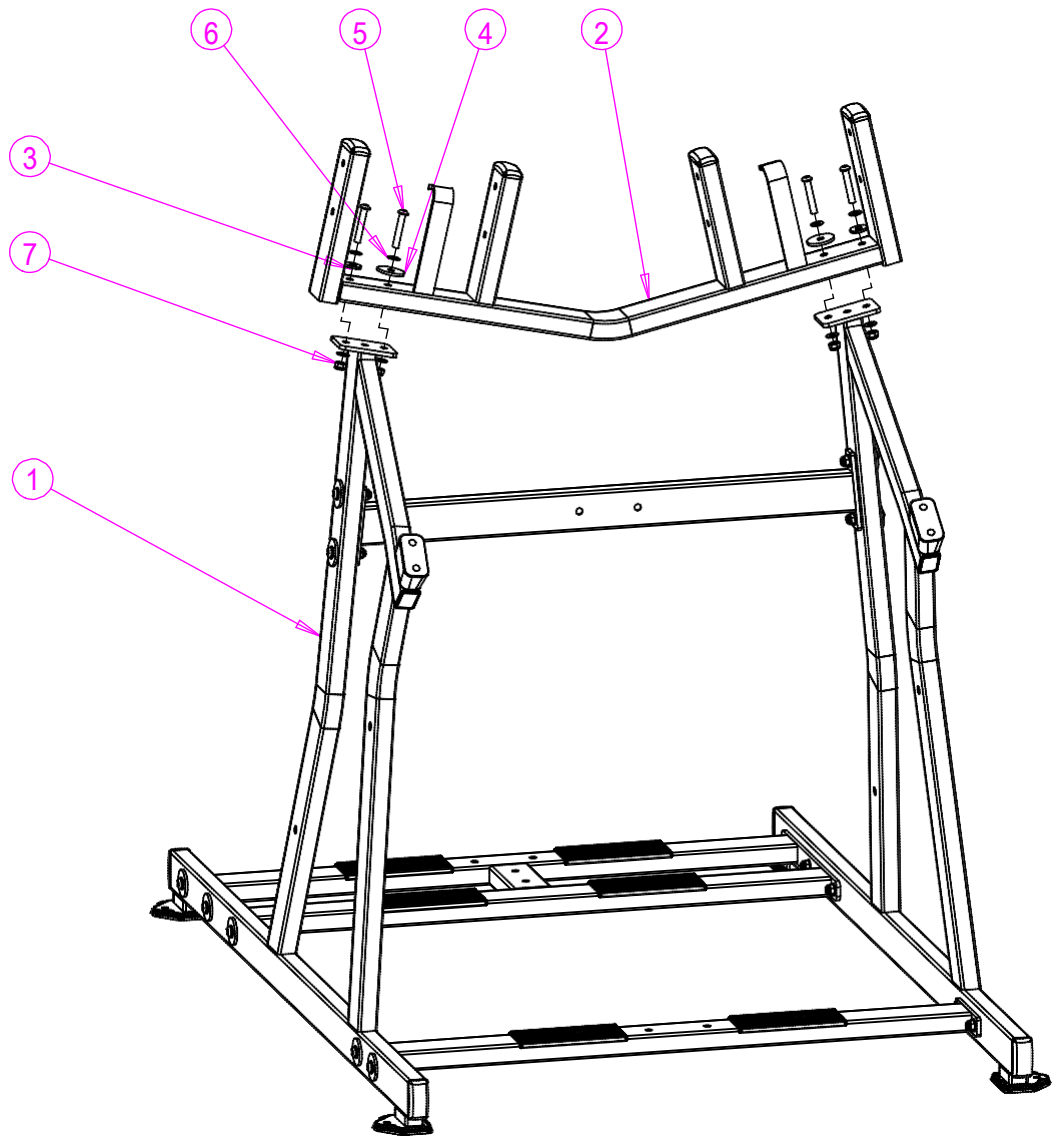
HS-1002 CHEST/BACK

INSTALLATION INSTRUCTION

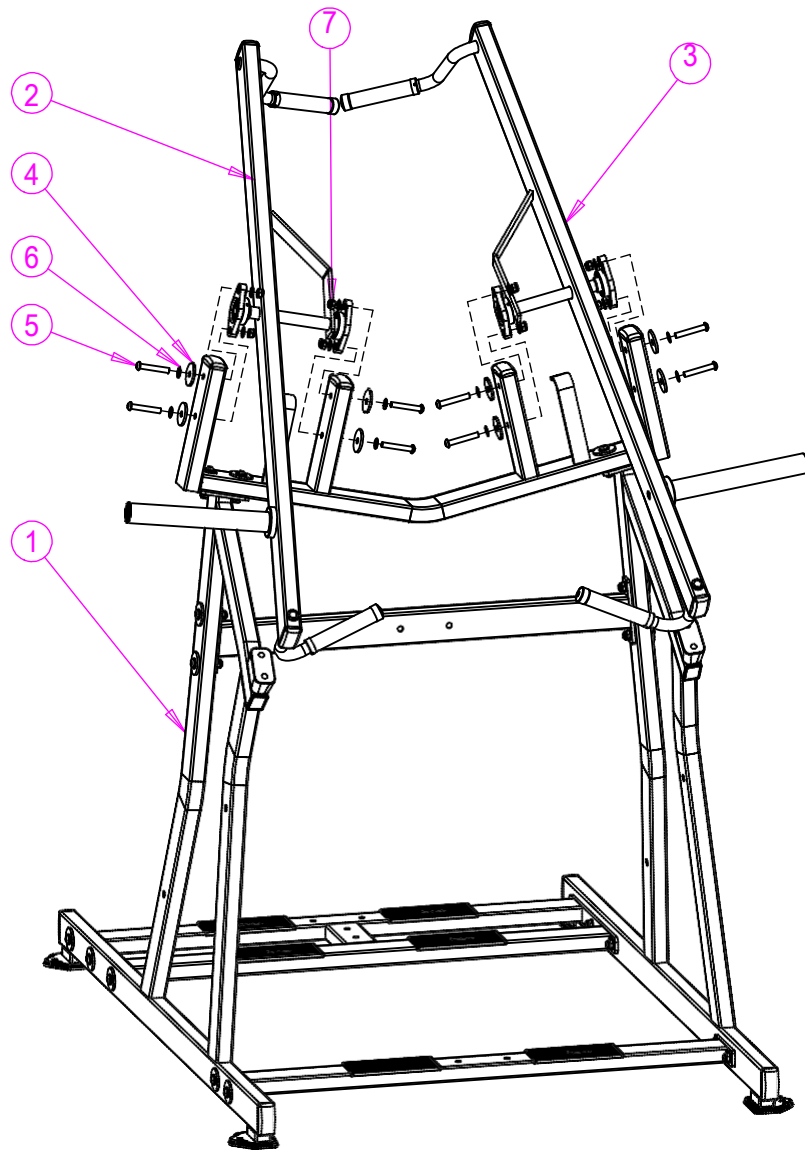


NO.	CODE	NAME	QUANTIT
1	R20-1317	connection tube	1
2	R20-1318	connection tube	1
3	R20-1319	side frame (left)	1
4	R20-1320	side frame(right)	1
5	R02-1386	55 reinforcing pad	14
6	R04-5017	connection tube	1
7	R06-1034	40X80 square pad	4
8	cup head M12X70	cup head M12X70	14
9	M12 flat washer	M12 flat washer	28
10	M12 anti-loose nut	M12 anti-loose nut	14

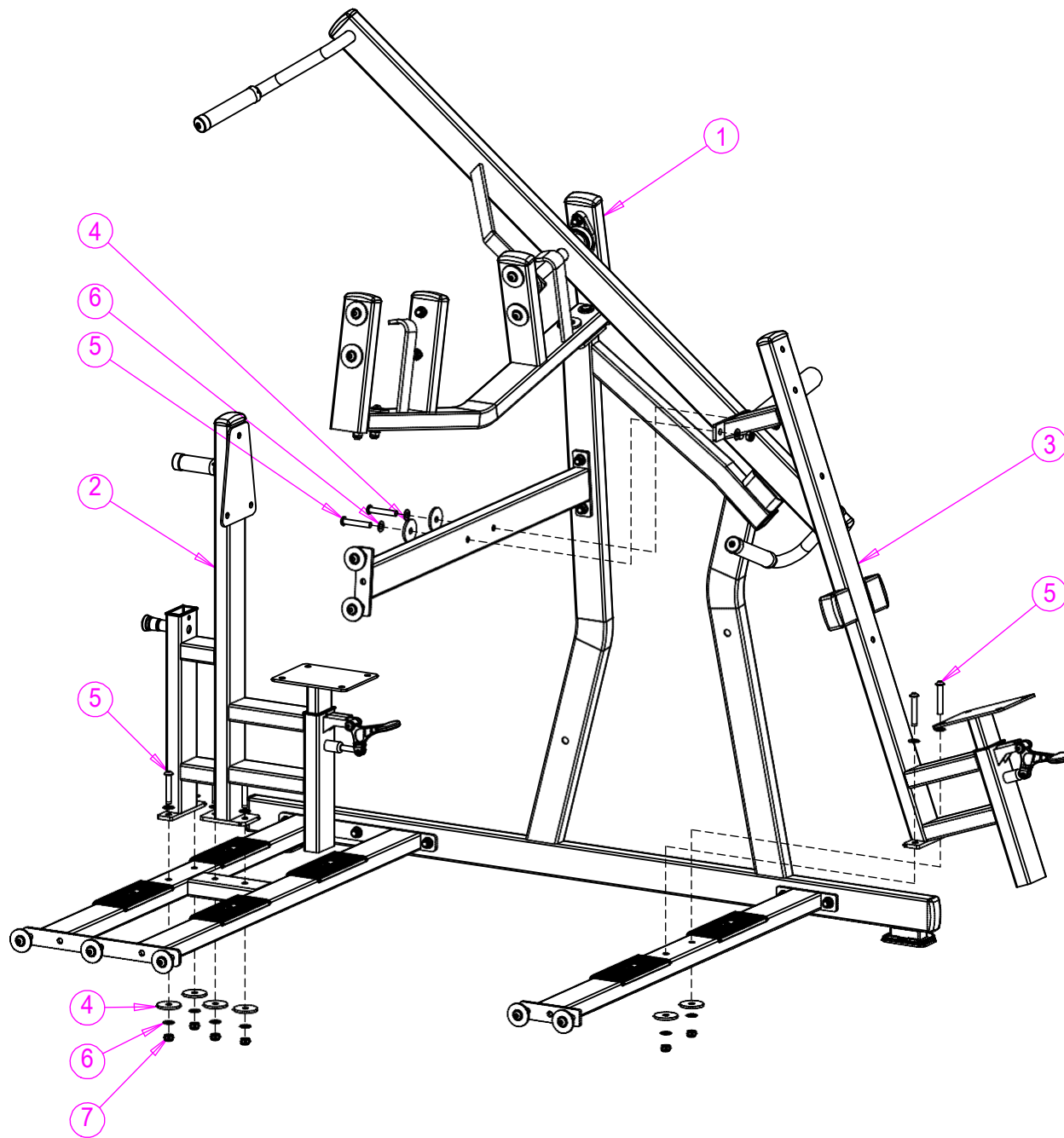




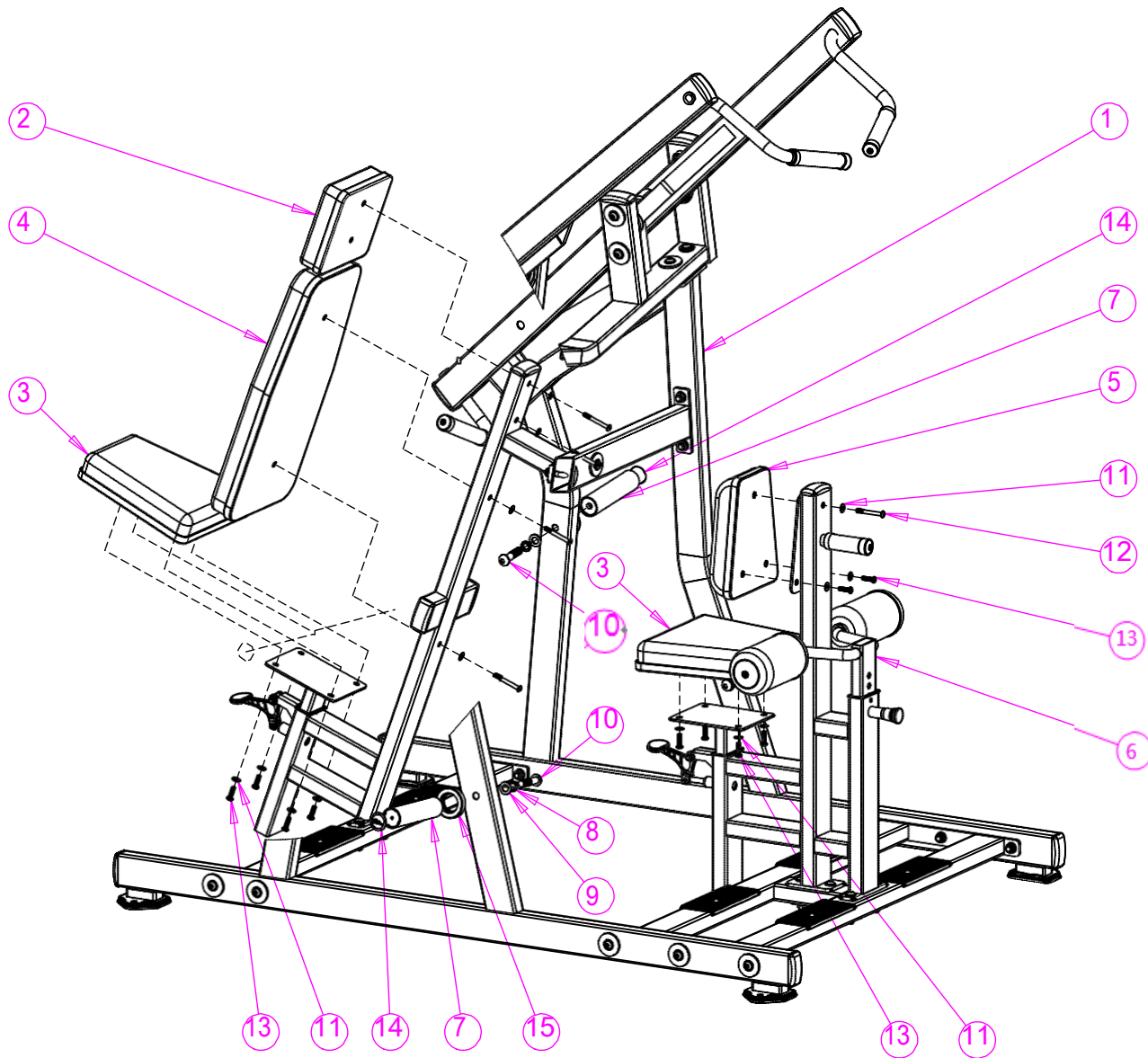
NO.	CODE	NAME	QUANTITY
1	Step 1	Step 1	1
2	R20-1321	Arm frame	1
3	35 reinforcing pad	35 reinforcing pad	2
4	55 reinforcing pad	55 reinforcing pad	2
5	M12X70	cup head M12X70	4
6	M12 flat washer	M12 flat washer	8
7	M12 anti-loose nut	M12 anti-loose nut	4



NO.	CODE	NAME	QUANTITY
1	Step 2	Step 2	1
2	R20-1325	Arm frame(right)	1
3	R20-1324	Arm frame(left)	1
4	R02-1386	55 reinforcing pad	8
5	cup head M12X75	cup head M12X75	8
6	M12 flat washer	M12 flat washer	16
7	M12 anti-loose nut	M12 anti-loose nut	8



NO.	CODE	NAME	QUANTITY
1	Step 3	Step 3	1
2	R20-1323	Back seat frame	1
3	R20-1322	Front seat frame	1
4	55 reinforcing pad	55 reinforcing pad	8
5	M12X70	cup head M12X70	8
6	M12 flat washer	M12 flat washer	16
7	M12 anti-loose nut	M12 anti-loose nut	8



NO.	CODE	NAME	QUANTITY
1	Step 4	Step 4	1
2	R20-1055	Small cushion	1
3	R20-1050	Cushion	2
4	R20-1053	Big Cushion	1
5	R20-1040	Chest cushion	1
6	R20-1025	1005 roller	1
7	R04-1164	200 Bar set	4
8	M16 spring washer	M16 spring washer	4
9	M16 spring washer	M16 spring washer	4
10	M16X70	M16X70	4
11	M8 flat washer	M8 flat washer	15
12	M8X70	cup head M8X70	5
13	M8X30	cup head M8X30	10
14	R21-1004	Bar Label	4
15	R06-1186	Bar Ring	4